



ENERGY MONITOR

INSTALLATION GUIDE

To successfully install this product, you must connect it to the internet and register the product for the customer using the edgeConnected™ Installer App.

CHECKLIST

1. Download the edgeConnected™ Installer App
2. Install the energy monitor
3. Connect product to the internet
4. Register device to customer through edgeConnected™ Installer App

STEP 1 - INSTALL EDGECONNECTED APP

- A. Go to www.edgeconx.com/installer-hub
- B. Register to become an installer
- C. Download the edgeConnected™ Installer App on your smart phone or tablet (available for Apple & Android)

STEP 2 - PRODUCT INSTALLATION

- A. Find the wiring diagrams for the energy monitor installation in the Installer App based on the electrical phase and customer configuration requirements. (General, single and three phase wiring guides are also shown on the back of this manual)

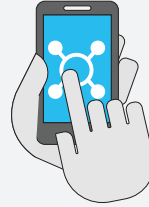
STEP 3 - INTERNET CONNECTION SETUP

- **4G Internet Connection Setup**
The 4G energy monitor will automatically make connection to the internet when powered. Successful connection will result in a solid amber LED showing on the front of the unit. If you have poor connectivity the unit will show a flashing LED sequence (Further details are shown within the edgeConnected™ Installer App)
- **Wifi Internet Connection Setup**
Wifi setup can be conducted via either WPS mode on compatible routers or through manual configuration. A step by step guide to establishing internet connection is shown in the commissioning app

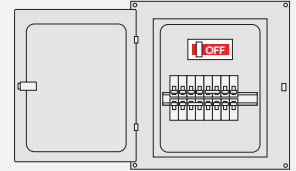
STEP 4 - COMMISSIONING

- A. The edgeConnected™ Installer App guides you through the steps of installation and customer onboarding
- B. Please refer to your customer before installing the product to ensure the wiring configuration meets their requirement for circuit monitoring

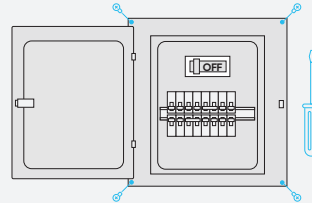
PROCESS



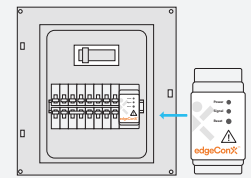
- I. Register for edgeConnected™ Installer App



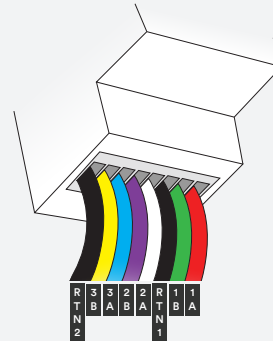
- II. Turn off the power



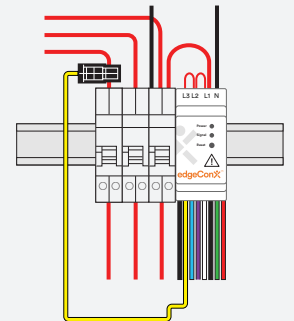
- III. Remove panel cover



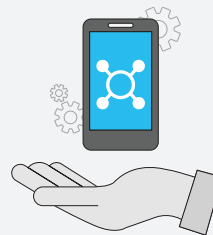
- IV. Find location for energy monitor on DIN rail. **Ensure the front of your energy monitor is visible**



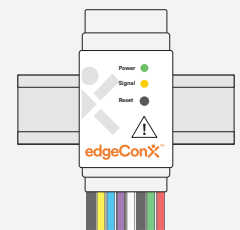
- V. Install 6 x CT's. Refer to back page for single phase



- VI. Connect the voltage connection. **Ensure polarities are correct**

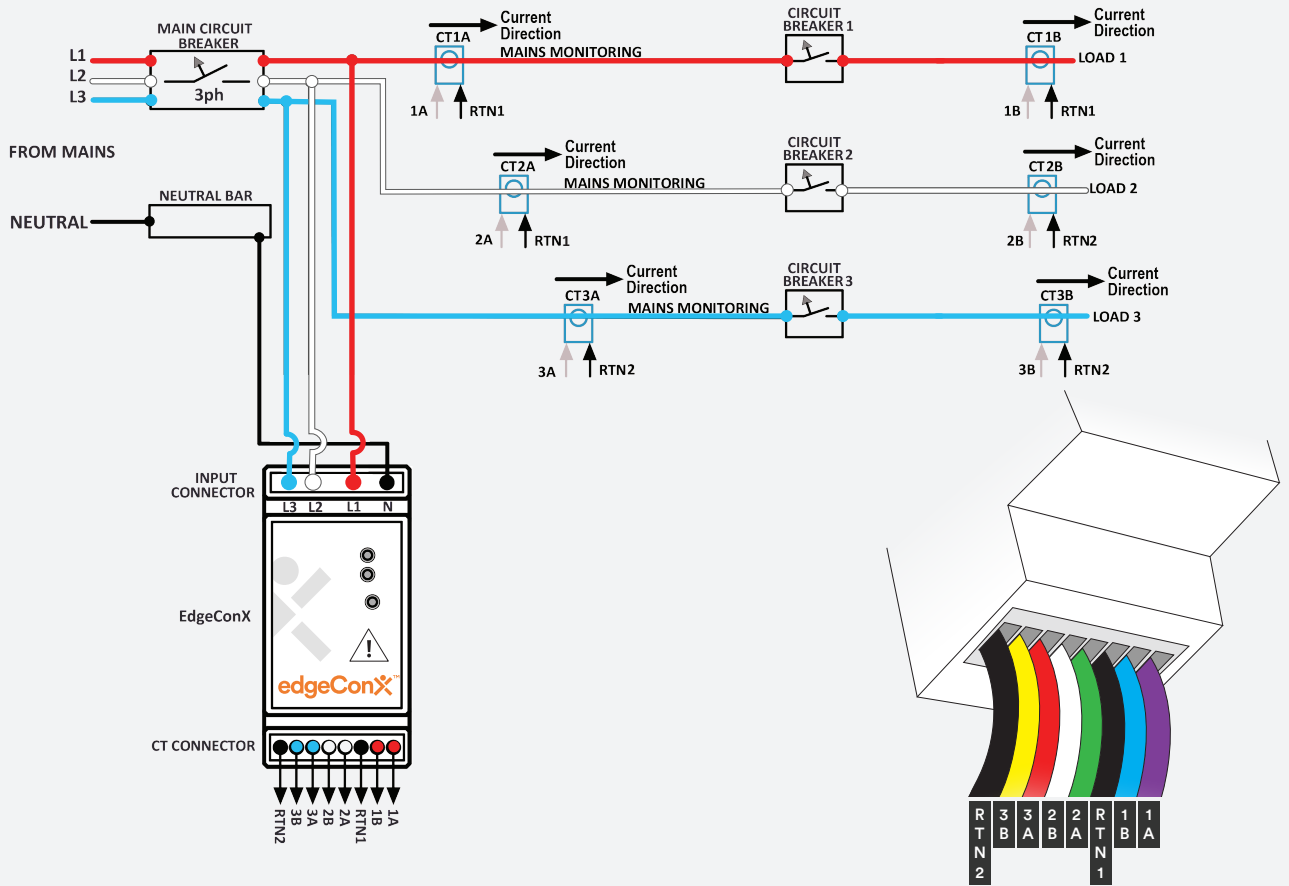


- VIII. Commission the install on the edgeConnected™ Installer App



- IX. Wait for the signal light to become solid yellow to confirm successful installation

WIRING DIAGRAM: THREE PHASE INSTALLATION



WIRING DIAGRAM: SINGLE PHASE INSTALLATION

